

CB United G02

Columbia Basin United FC

Moses Lake, WA

G02 total strength=21

attack=0.15 defense=0.03

fall league = DVI GU11 Reebok U11, PSPL-Inl
notes= white

alt names used:

CB UNITED FC CB UNITED G02 WHITE

CB United G02

CB UNITED FC CB UNITED G02 WHITE (WA)

CB UNITED G02 WHITE

Venues played:

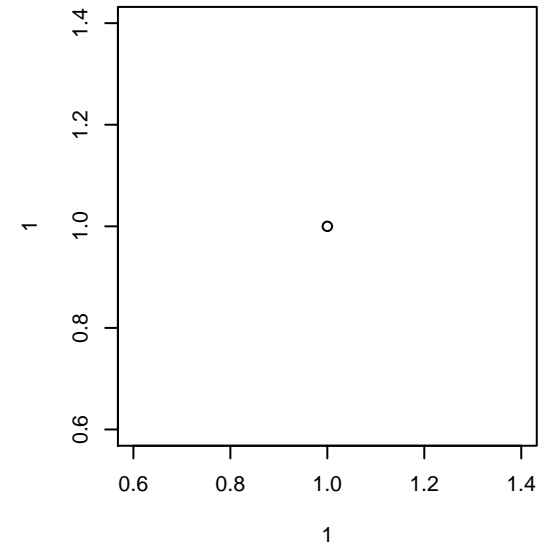
District 6 Fall Kickoff GU11/12 Columbia U11

PSPL-Inland Dev Div 2 U11

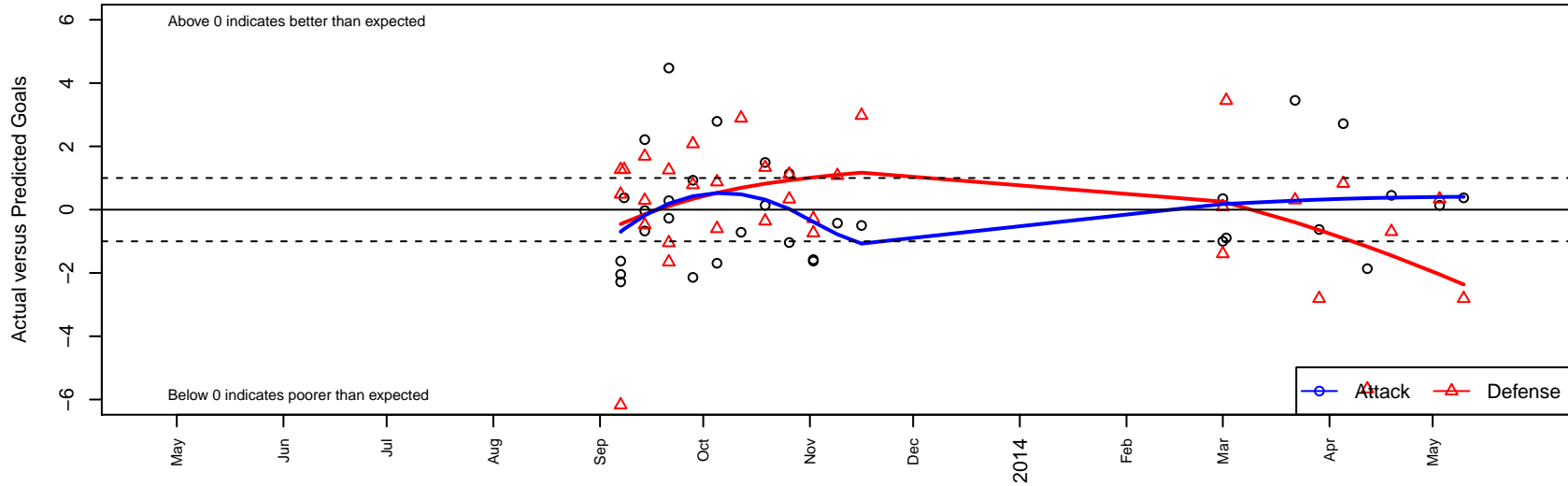
DVI GU11 Reebok U11

Blue Mtn Exchange Group A U11

Spr D6 GU11 Umbro U11



CB United G02
Dots are actual minus expected GF (blue circles) and GA (red triangles).
Blue line is smoothed change in attack strength. Red is smoothed change in defense strength.



| | date | home | | away | | venue | pred.home | pred.away |
|------|------------|-----------------------------------|----|-----------------------------------|----|-------------------------------|-----------|-----------|
| 3813 | 2014-05-10 | BMSC Lightning G02 | 10 | CB United G02 | 2 | Spr D6 GU11 Umbro U11 | 7.19 | 1.63 |
| 3808 | 2014-05-03 | CB United G02 | 2 | Columbia Basin YSA Dominators G02 | 4 | Spr D6 GU11 Umbro U11 | 1.86 | 4.33 |
| 3738 | 2014-04-19 | CB United G02 | 8 | Hermiston United G02 | 1 | Spr D6 GU11 Umbro U11 | 7.55 | 0.31 |
| 3688 | 2014-04-12 | Columbia Basin YSA Dominators G02 | 10 | CB United G02 | 0 | Spr D6 GU11 Umbro U11 | 4.33 | 1.86 |
| 3622 | 2014-04-05 | Moscow United G02 | 2 | CB United G02 | 5 | Spr D6 GU11 Umbro U11 | 2.83 | 2.28 |
| 3596 | 2014-03-29 | CB United G02 | 1 | BMSC Lightning G02 | 10 | Spr D6 GU11 Umbro U11 | 1.63 | 7.19 |
| 3537 | 2014-03-22 | Hermiston United G02 | 0 | CB United G02 | 11 | Spr D6 GU11 Umbro U11 | 0.31 | 7.55 |
| 3307 | 2014-03-02 | SSC Shadow Marta G02 | 8 | CB United G02 | 0 | Blue Mtn Exchange Group A U11 | 11.45 | 0.89 |
| 3255 | 2014-03-01 | CB United G02 | 0 | Cheney Storm FC G02 | 7 | Blue Mtn Exchange Group A U11 | 1.00 | 5.61 |
| 3257 | 2014-03-01 | CB United G02 | 1 | Boise Nationals G02 | 9 | Blue Mtn Exchange Group A U11 | 0.65 | 9.09 |
| 2803 | 2013-11-16 | CB United G02 | 2 | ASE Morgan G03 | 2 | PSPL-Inland Dev Div 2 U11 | 2.50 | 4.98 |
| 2694 | 2013-11-09 | Wenatchee Fire Black Gundrsen G02 | 4 | CB United G02 | 2 | PSPL-Inland Dev Div 2 U11 | 5.08 | 2.43 |
| 2510 | 2013-11-02 | Three Rivers -Unk G02 | 5 | CB United G02 | 0 | DVI GU11 Reebok U11 | 4.27 | 1.63 |
| 2563 | 2013-11-02 | Cobra Turf Queens G02 | 6 | CB United G02 | 1 | PSPL-Inland Dev Div 2 U11 | 5.71 | 2.58 |
| 2372 | 2013-10-26 | Columbia Basin YSA Dominators G02 | 4 | CB United G02 | 3 | DVI GU11 Reebok U11 | 4.33 | 1.86 |
| 2419 | 2013-10-26 | FC Spokane Grey 2 G02 | 6 | CB United G02 | 1 | PSPL-Inland Dev Div 2 U11 | 7.11 | 2.04 |
| 2222 | 2013-10-19 | CB United G02 | 2 | Columbia Basin YSA Dominators G02 | 3 | DVI GU11 Reebok U11 | 1.86 | 4.33 |
| 2285 | 2013-10-19 | CB United G02 | 4 | CWSA Grey G02 | 3 | PSPL-Inland Dev Div 2 U11 | 2.51 | 2.64 |
| 2065 | 2013-10-12 | Pullman Pumas G02 | 1 | CB United G02 | 0 | DVI GU11 Reebok U11 | 3.89 | 0.71 |
| 1865 | 2013-10-05 | SSC Shadow Elite Sennott G02 | 5 | CB United G02 | 1 | DVI GU11 Reebok U11 | 5.88 | 2.69 |
| 1934 | 2013-10-05 | CB United G02 | 7 | Spokane Foxes White G02 | 2 | PSPL-Inland Dev Div 2 U11 | 4.21 | 1.40 |
| 1710 | 2013-09-28 | BMSC G02 | 9 | CB United G02 | 2 | DVI GU11 Reebok U11 | 9.79 | 1.07 |
| 1760 | 2013-09-28 | Breakers Schroeder G02 | 1 | CB United G02 | 2 | PSPL-Inland Dev Div 2 U11 | 3.08 | 4.14 |
| 1551 | 2013-09-21 | CB United G02 | 6 | SSC Shadow Wambach G02 | 7 | DVI GU11 Reebok U11 | 1.52 | 5.95 |
| 1555 | 2013-09-21 | CB United G02 | 5 | SSC Shadow Morgan G02 | 3 | DVI GU11 Reebok U11 | 4.72 | 1.34 |
| 1615 | 2013-09-21 | CB United G02 | 2 | Sandpoint Strikers G02 | 3 | PSPL-Inland Dev Div 2 U11 | 2.27 | 4.25 |
| 1377 | 2013-09-14 | SSC Shadow United Heath G02 | 0 | CB United G02 | 8 | DVI GU11 Reebok U11 | 0.29 | 5.79 |
| 1383 | 2013-09-14 | SSC Shadow United Rapinoe G02 | 4 | CB United G02 | 3 | DVI GU11 Reebok U11 | 3.52 | 3.03 |

| | date | home | | away | | venue | pred.home | pred.away |
|------|-------------|-----------------------|---|----------------------------|---|--|------------------|------------------|
| 1453 | 2013-09-14 | CB United G02 | 0 | Spokane Scotties Klein G02 | 5 | PSPL-Inland Dev Div 2 U11 | 0.67 | 6.69 |
| 1322 | 2013-09-08 | Three Rivers -Unk G02 | 3 | CB United G02 | 2 | District 6 Fall Kickoff GU11/12 Columbia U11 | 4.27 | 1.63 |
| 1213 | 2013-09-07 | Three Rivers -Unk G02 | 3 | CB United G02 | 0 | District 6 Fall Kickoff GU11/12 Columbia U11 | 4.27 | 1.63 |
| 1215 | 2013-09-07 | CB United G02 | 0 | Moscow United G02 | 9 | District 6 Fall Kickoff GU11/12 Columbia U11 | 2.28 | 2.83 |
| 1284 | 2013-09-07 | ASE Navy G02 | 2 | CB United G02 | 0 | PSPL-Inland Dev Div 2 U11 | 2.49 | 2.04 |